

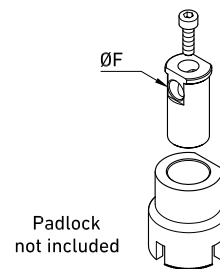


LOCKING DEVICE

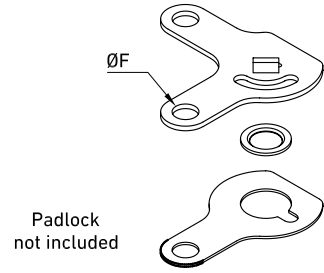
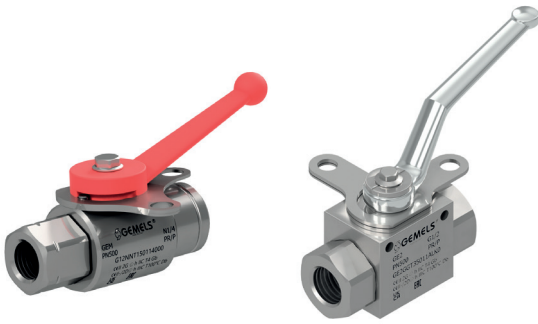
Edition. 21.4

- **LKB** FOR GM - GN
- **LKF** FOR GE - GB - GHP - GPK
- **LKR** FOR GR
- **SECURITY BLOCK** FOR GE - GB
GHP - GPK (except DN6) - G3/4K
- **LKS** FOR SBF - SBF-W



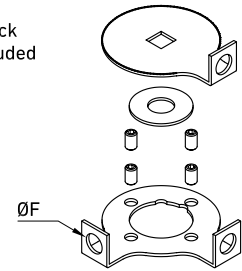

LKB FOR GM - GN

TYPE	DN	SW	ØF	MATERIAL	TREATMENT	WEIGHT	ITEM CODE
LK6-B	6-10-13	mm 9	9,5	CARBON STEEL	GALVANIZED	kg 0,178	KMK00LK6B2Z
		inch 0,35	0,37			lb 0,39	
LK6-B	6-10-13	mm 9	9,5	STAINLESS STEEL	-	kg 0,178	KMK00LK6B6H
		inch 0,35	0,37			lb 0,39	
LK20-B	20-25	mm 14	10,5	CARBON STEEL	GALVANIZED	kg 0,413	KMK00LK20B2Z
		inch 0,55	0,41			lb 0,91	
LK20-B	20-25	mm 14	10,5	STAINLESS STEEL	-	kg 0,413	KMK00LK20B6H
		inch 0,55	0,41			lb 0,91	
LK32-B	32-40-50	mm 17	10,5	CARBON STEEL	GALVANIZED	kg 0,53	KMK00LK32B2Z
		inch 0,67	0,41			lb 1,17	
LK32-B	32-40-50	mm 17	10,5	STAINLESS STEEL	-	kg 0,53	KMK00LK32B6H
		inch 0,67	0,41			lb 1,17	

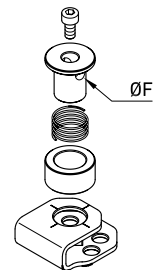


LKF FOR GE - GB - GHP - GPK

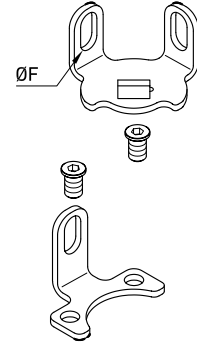
TYPE	DN	SW	ØF	MATERIAL	TREATMENT	WEIGHT	ITEM CODE
LK6-MF	6 only for GPK	mm 6	6,8	CARBON STEEL	GALVANIZED	kg 0,043	K0K00LK6MF2Z
		inch 0,24	0,27			lb 0,09	
LK6-F	6-10-13	mm 9	9,5	CARBON STEEL	GALVANIZED	kg 0,043	K0K00LK6F2Z
		inch 0,35	0,37			lb 0,09	
LK6-F	6-10-13	mm 9	9,5	STAINLESS STEEL	-	kg 0,043	K0K00LK6F6H
		inch 0,35	0,37			lb 0,09	
LK20-F	20-25	mm 14	9,5	CARBON STEEL	GALVANIZED	kg 0,121	K0K00LK20F2Z
		inch 0,55	0,37			lb 0,27	
LK20-F	20-25	mm 14	9,5	STAINLESS STEEL	-	kg 0,121	K0K00LK20F6H
		inch 0,55	0,37			lb 0,27	
LK32-F	32-40-50	mm 17	9,5	CARBON STEEL	GALVANIZED	kg 0,187	K0K00LK32F2Z
		inch 0,67	0,37			lb 0,41	
LK32-F	32-40-50	mm 17	9,5	STAINLESS STEEL	-	kg 0,187	K0K00LK32F6H
		inch 0,67	0,37			lb 0,41	


 Padlock
not included

LKR FOR GR

TYPE	DN	SW	ØF	MATERIAL	TREATMENT	WEIGHT	ITEM CODE
LKR13	13	mm 9	9,5	CARBON STEEL	GALVANIZED	kg 0,1	K0K00LKR132Z
		inch 0,35	0,37			lb 0,22	
LKR13	13	mm 9	9,5	STAINLESS STEEL	-	kg 0,1	K0K00LKR136H
		inch 0,35	0,37			lb 0,22	
LKR20	20-25	mm 14	9,5	CARBON STEEL	GALVANIZED	kg 0,18	K0K00LKR202Z
		inch 0,55	0,37			lb 0,40	
LKR20	20-25	mm 14	9,5	STAINLESS STEEL	-	kg 0,18	K0K00LKR206H
		inch 0,55	0,37			lb 0,40	
LKR32	32-40-50	mm 17	9,5	CARBON STEEL	GALVANIZED	kg 0,34	K0K00LKR322Z
		inch 0,67	0,37			lb 0,75	
LKR32	32-40-50	mm 17	9,5	STAINLESS STEEL	-	kg 0,34	K0K00LKR326H
		inch 0,67	0,37			lb 0,75	
LKR65	65-80	mm 19	9,5	CARBON STEEL	GALVANIZED	kg 0,55	K0K00LKR652Z
		inch 0,75	0,37			lb 1,21	
LKR65	65-80	mm 19	9,5	STAINLESS STEEL	-	kg 0,55	K0K00LKR656H
		inch 0,75	0,37			lb 1,21	
LKR100	100	mm 24	9,5	CARBON STEEL	GALVANIZED	kg 1,08	K0K00LKR1002Z
		inch 0,94	0,37			lb 2,38	
LKR100	100	mm 24	9,5	STAINLESS STEEL	-	kg 1,08	K0K00LKR1006H
		inch 0,94	0,37			lb 2,38	

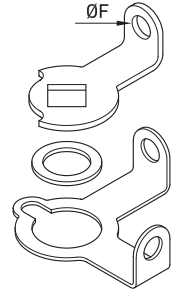

SECURITY BLOCK FOR GE - GB - GHP - GPK (EXCEPT DN6) - G3/4K

TYPE	DN	SW	ØF	MATERIAL	TREATMENT	WEIGHT	ITEM CODE
SB6	6-10-13 6 only for G3/4K	mm 9	6,8	CARBON STEEL	GALVANIZED	kg 0,066	K0B00SB61Z
		inch 0,35	0,27			lb 0,15	
SB20	20-25 10-13-20 only for G3/4K	mm 14	9,5	CARBON STEEL	GALVANIZED	kg 0,221	K0B00SB201Z
		inch 0,55	0,37			lb 0,49	
SB32	32-40-50 25 only for G3/4K	mm 17	9,5	CARBON STEEL	GALVANIZED	kg 0,24	K0B00SB321Z
		inch 0,67	0,37			lb 0,53	



LKS FOR SBF - SBF-W

TYPE	DN	ANSI		SW	ØF	MATERIAL	TREATMENT	WEIGHT	
LK13 - S	13	150-300-600	mm	9	6,5	CARBON STEEL	GALVANIZED	kg	0,03
			inch	0,35	0,26			lb	0,07
LK13 - S	13	150-300-600	mm	9	6,5	STAINLESS STEEL	-	kg	0,03
			inch	0,35	0,26			lb	0,07
LK20 - S 150	20	150	mm	14	6,5	CARBON STEEL	GALVANIZED	kg	0,07
			inch	0,55	0,26			lb	0,15
LK20 - S 150	20	150	mm	14	6,5	STAINLESS STEEL	-	kg	0,07
			inch	0,55	0,26			lb	0,15
LK20 - S	20-25	150 (only for DN25) 300-600	mm	14	6,5	CARBON STEEL	GALVANIZED	kg	0,07
			inch	0,55	0,26			lb	0,15
LK20 - S	20-25	150 (only for DN25) 300-600	mm	14	6,5	STAINLESS STEEL	-	kg	0,07
			inch	0,55	0,26			lb	0,15
LK32 - S	32-40-50	150-300-600	mm	17	6,5	CARBON STEEL	GALVANIZED	kg	0,08
			inch	0,67	0,26			lb	0,18
LK32 - S	32-40-50	150-300-600	mm	17	6,5	STAINLESS STEEL	-	kg	0,08
			inch	0,67	0,26			lb	0,18
LK80 - S	80	150-300-600	mm	19	10	CARBON STEEL	GALVANIZED	kg	0,16
			inch	0,75	0,39			lb	0,35
LK80 - S	80	150-300-600	mm	19	10	STAINLESS STEEL	-	kg	0,16
			inch	0,75	0,39			lb	0,35
LK100 - S	100	150-300-600	mm	24	12	CARBON STEEL	GALVANIZED	kg	0,3
			inch	0,94	0,47			lb	0,66
LK100 - S	100	150-300-600	mm	24	12	STAINLESS STEEL	-	kg	0,3
			inch	0,94	0,47			lb	0,66



LKF LS (LIMIT SWITCH) FOR GE - GB - GHP - GPK (EXCEPT DN6)

TYPE	DN	SW	ØF	MATERIAL	TREATMENT	WEIGHT	ITEM CODE
LK6-F LS	6-10-13	mm 9	9,5	CARBON STEEL	GALVANIZED	kg 0,019	K11A00207AA000Z
		inch 0,35	0,37			lb 0,04	
LK6-F LS	6-10-13	mm 9	9,5	STAINLESS STEEL	-	kg 0,019	K11A00207AA000H
		inch 0,35	0,37			lb 0,04	
LK20-F LS	20-25	mm 14	9,5	CARBON STEEL	GALVANIZED	kg 0,056	K11A00208AA000Z
		inch 0,55	0,37			lb 0,12	
LK20-F LS	20-25	mm 14	9,5	STAINLESS STEEL	-	kg 0,056	K11A00208AA000H
		inch 0,55	0,37			lb 0,12	
LK32-F LS	32-40-50	mm 17	9,5	CARBON STEEL	GALVANIZED	kg 0,055	K11A00209AA000Z (for GHP)
		inch 0,67	0,37			lb 0,12	K11A00213AA000Z (for GB)
LK32-F LS	32-40-50	mm 17	9,5	STAINLESS STEEL	-	kg 0,055	K11A00209AA000H (for GHP)
		inch 0,67	0,37			lb 0,12	K11A00213AA000H (for GB)